

Monoclonal antibody to MCP-1

Cat. #: Mab-605086 (0.1mg)

Description:

Monocyte chemoattractant protein-1 (MCP-1) is a member of the chemokine-beta family of cytokines. The protein is structurally related to the CXC subfamily of cytokines. Members of this subfamily are characterized by two cysteines separated by a single amino acid. This cytokine displays chemotactic activity for monocytes and basophils but not for neutrophils or eosinophils. It has been implicated in the pathogenesis of diseases characterized by monocytic infiltrates, like psoriasis, rheumatoid arthritis and atherosclerosis. It binds to chemokine receptors CCR2 and CCR4. It may play an important role in the initiation and/or progression of pulmonary hypertension (PH). Blockade of a systemic MCP-1 signal pathway in vivo may prevent PH.

Immunogen/Specificity:

Ni-NTA purified recombinant human MCP-1 expressed in E.Coli strain BL21 (DE3).

Applications :

Anti- MCP-1 recognizes recombinant human MCP-1 by Western Blot and ELISA.

Dilution:

Western Blot: 1:500-1,000

ELISA: 1,000-2,000.

Formulation

Antibodies are purified by protein A affinity chromatography.

Reference:

1. Yoshimura T. et al. 1989. FEBS Lett. 244:487-493.
2. Yoshimura T. et al. 1991. Adv. Exp. Med. Biol. 305:47-56
3. Rollins B.J. et al. 1991. Genomics. 10:489-492

Clone Number: 1A7B8

Isotype: IgG1.kappa

Species: Human

Storage and Stability: stored at -20 C

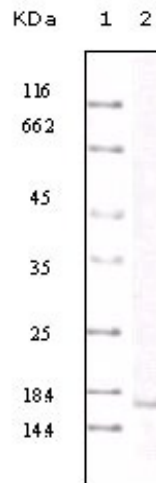


Figure 1: Western blot analysis using anti- human MCP-1 monoclonal antibody against truncated MCP-1 recombinant protein.