

Monoclonal antibody to IL-16

Cat. #: Mab-604013 (0.1mg)

Description:

Interleukin-16, also known as lymphocyte chemoattractant factor (LCF), is a chemotactic cytokine that stimulates a migratory response in CD4+ lymphocytes, monocytes, and eosinophils through binding to the CD4 receptor. IL-16 induces human T-lymphocyte expression of interleukin 2 receptor and upregulates major histocompatibility complex molecules on resting human T lymphocyte. It is able to render CD4+ T cells unresponsive to TCR/CD3 stimuli. Moreover, IL-16 inhibits the replication of T cell and monocyte tropic HIV strains in vitro.

Immunogen/Specificity:

Ni-NTA purified recombinant human IL-16 expressed in E. Coli strain BL21 (DE3).

Applications :

Anti- IL-16 recognizes recombinant IL-16 by Western Blot and ELISA.

Dilution:

Western Blot: 1:500-1,000

ELISA: Determining optimal working dilutions by titration test.

Formulation

Antibodies are purified by protein A affinity chromatography.

Reference:

1. Cruikshank, W.W. et al 1994. Proc. Nat. Acad. Sci. 91: 5109-5113, PubMed ID : 7910967

Clone Number: 1F12D7

Isotype: IgG1

Species: Human

Storage and Stability: stored at -20 C

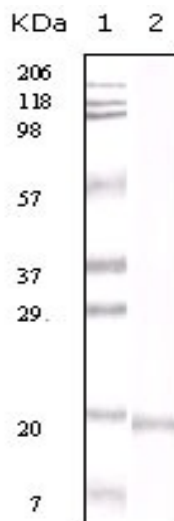


Figure 1: Western blot analysis using anti- human IL-16 monoclonal antibody against truncated IL-16 recombinant protein.