

Monoclonal Antibody to Human IgG

Cat. # :Mab-604003 (0.1mg)

Description:

Monoclonal Anti-Human IgG is derived from the hybridoma¹ produced by the fusion of mouse myeloma cells and splenocytes from an immunized mouse. It is specific for the whole human IgG molecule, has no cross action with human IgM molecule as determined by an ELISA. Reactivity is observed with all human IgG subclasses but not with the Fab fragment of human IgG, the antibody site is located in the terminal end of human IgG (part of the Fab fragment), the Fc portion has various important functions such as complement fixation, site for rheumatoid factor

Immunogen/Specificity:

Chrompure Human IgG, Fc Fragment

Applications :

Western Blot: 1: 200- 1: 1,000

ELISA: Propose dilution 1: 10,000.

Determining optimal working dilutions by titration test.

Formulation

Antibodies are purified by protein A affinity chromatography.

Reference:

1.Roitt,I, et al :”Immunology”,Mosby.,London, England, (1996) fourth edition.

2.Vlug, A. et al “The structure and function of human IgG subclasses”. Eur.Clin.Lab. 8, 26 (1989)

Clone Number: 4D2D9G8

Isotype: IgG1

Species Reactivity: Human

Storage and Stability: When stored at -20 C, this antibody is stable for 24 months.

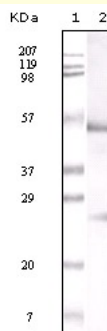


Figure 1: Western blot analysis using anti-Human IgG monoclonal antibody against human serum IgG.